

OPEN BLUEPRINT FOR STRUCTURAL IMPROVEMENT

Five lever areas where you and community members can take action so everyone has an equitable chance to thrive.

Amplify consumer voices

This work centers the voice and experience of those not well-served by the present oral health care system. By engaging directly with communities, building grass-roots advocacy capacity, and collaborating with other progressive movements we can create a “megaphone” for the people.

SAMPLE ACTION

Join other consumer groups to learn about their issues; build meaningful, trusting relationships; and promote ways to integrate oral health into their messaging.



Advance oral health policy

The work to change the oral health system engages everyone to collaborate from a shared policy agenda, collectively urging changes at the federal, state, and local levels. The aim is to address inequities by promoting policies that strengthen oral health coverage for all, encourage innovation and integration, and diversify the workforce.

SAMPLE ACTION

Establish a broad strategy to advocate for changes in federal, state, and local laws and regulations in partnership with consumers; identify opportunities and design plans to implement and assess.



Integrate dental and medical

Because oral health is fundamental to overall health we work within our organizations, among our peers, and in concert with educational institutions, regulatory bodies and other entities to achieve broad awareness and acceptance of that fact. We promote pilots, policies and practices to advance interprofessional care, integrate coverage and health information, and support everyone’s learning about the best ways to connect the mouth to the body.

SAMPLE ACTION

Identify and promote pilot projects to co-locate medical and dental schools, including shared curricula and rotations for students and residents.



Emphasize prevention

Prevention works in oral health and current payment approaches and traditional clinical practices favor invasive intervention over both prevention and effective non-invasive care. Communities without access to basic resources like healthy food, transportation, tools for at home oral care, and time face challenges in maintaining good oral health. Prevention will be the norm, care teams oriented to an upstream approach, and better health outcomes valued and achieved.

SAMPLE ACTION

Identify and promote lessons learned and cost/benefit outcomes from oral health prevention and non-invasive interventions, advocate for reimbursement



Bring care to the people

To close the oral health gap, we must bring care to the people instead of insisting that people come to the care. We listen to communities to learn what they need, then support the allocation of funding for, and design and implement new models of care and workforce deployment. We meet consumers where they are, in non-traditional and trusted settings, and cultivate new messengers of health, ultimately creating healthier communities.

SAMPLE ACTION

Use focus groups and other methods to develop tools that can be used to analyze the local policy environment, determine policy barriers that inhibit systems for bringing oral health care to where people are.





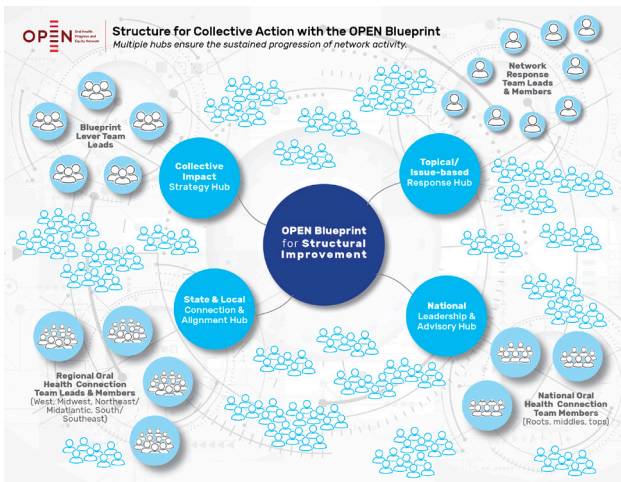
ABOUT OPEN

The Oral Health Progress and Equity Network (OPEN) is a national network composed of diverse organizations and individuals that include oral health professionals, advocates, state coalition leaders, community organizers, and grass-roots community organizations. OPEN's mission is to ignite change and build collective power to transform individuals, communities, and systems. Its vision is that oral health is integrated into overall health, and health care is equitable, accessible, and affordable for all. **Join us!**



BENEFITS OF OPEN MEMBERSHIP

- National, state, and community connections
- Participation in Network Response Teams around policy, data, disabilities and universal inclusion, health equity, LGBTQIA+, Medicare, Medicaid, public perception, and rural
- Access to over 3,000 partners across the country using an e-community platform, OPEN Communities
- Access to resources, toolkits, and advocacy and communication materials
- Special topical webinars, for example, an OPEN Data Stories series, and "Take 20's" to learn from and connect with others
- Opportunities for leadership positions within the Network
- In-person and virtual meetings for networking and capacity building



GETTING STARTED WITH THE BLUEPRINT

OPEN is closing in on a final collective impact strategy that will fundamentally change the national oral health system to be more equitable, affordable, and accessible for all. Blueprint Lever Teams are laying the foundation in partnership with other OPEN hubs to guide Network activity over the next five years.

The Network's Formal Leaders will support the implementation of the Blueprint in 2022 and beyond through their "hubs" focusing on local, state, national, and topical areas of interest.

Connect with the lever "hub(s)" of interest to you by emailing the lever lead!



TOOLS & RESOURCES

We know how important it is to be inclusive in the work and invite others to be part of creating solutions. Check out **OPEN's Practical Guide to OPEN Engagement** for tips and tools to build the relationships so critical to collective change work.



Join us at openoralhealth.org